

Hallows Eve

Chris Hoban
Arranged by Helen Vincent

$\text{♩} = 80$



Go light the lan - tern at your door, And hon-our those who've gone be - fore, the worlds that

5

VERSE 1



part us now are twain, For Hal-low's Eve is here__ a - gain. ooh__ ooh

11



ooh__ ooh The au-tumn leaves are tipped with fire Fruit hangs ripe u - pon the

16

CHORUS



briar. Go light the lan - tern at your door, And hon-our those who've gone be - fore, the worlds that

21

VERSE 2



part us now are twain, For Hal-low's Eve is here__ a - gain. ooh__ ooh

27



ooh__ ooh Ga-ther the fi - nal har-vest in For all the hard-ship win - ter

32

CHORUS



brings Go light the lan - tern at your door, And hon-our those who've gone be - fore, the worlds that

37

VERSE 3



part us now are twain, For Hal-low's Eve is here__ a - gain. ooh__ ooh

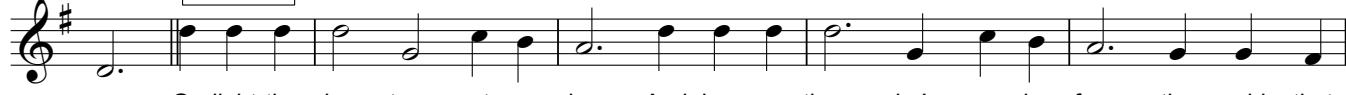
43



ooh__ ooh The sea-son turns to frost and dew__ Be-fore the sun its strength re -

48

CHORUS



news. Go light the lan - tern at your door, And hon-our those who've gone be - fore, the worlds that

53



part us now are twain, For Hal-low's Eve is here__ a - gain. the worlds that

57



part us now are twain, For Hal-low's Eve is here a - gain.

Hallows Eve

Alto

Chris Hoban
Arranged by Helen Vincent

$\text{♩} = 80$

Go light the lan - tern at your door, And hon-our those who've gone be - fore, the worlds that

5 **VERSE 1**

part us now are twain, For Hal-low's Eve is here__ a - gain 1. The west-'ring sun grows pale and

10

wan, The day grows dark, the nights draw long The au-tumn leaves are tipped with fire Fruit hangs

15 **CHORUS**

ripe u - pon the briar. Go light the lan - tern at your door, And hon-our those who've gone be -

20 **VERSE 2**

fore, the worlds that part us now are twain, For Hal-low's Eve is here__ a - gain

25

ooh__ ooh ooh__ ooh Ga-ther the fi - nal har-vest in For all the

31 **CHORUS**

hard-ship win - ter brings Go light the lan - tern at your door, And hon-our those who've gone be -

36 **VERSE 3**

fore, the worlds that part us now are twain, For Hal-low's Eve is here__ a - gain

41

ooh__ ooh ooh__ ooh The sea-son turns to frost and snow Be-fore the

47 **CHORUS**

sun its strength re news. Go light the lan - tern at your door, And hon-our those who've gone be -

52

fore, the worlds that part us now are twain, For Hal-low's Eve is here__ a -

56

gain the worlds that part us now are twain, For Hal-low's Eve is here__ a - gain

Hallows Eve

Tenor

Chris Hoban
Arranged by Helen Vincent

♩=80

Go light the lan - tern at your door, And hon - our those who've gone be - fore, the worlds that

5 **VERSE 1**

part us now are twain, For Hal - low's Eve is here__ a - gain ooh__ ooh

11

ooh__ ooh The au - tumn leaves are tipped with fire__ Fruit hangs ripe u - pon the

16 **CHORUS**

8 briar. Go light the lan - tern at your door, And hon - our those who've gone be - fore, the worlds that

21 **VERSE 2**

part us now are twain, For Hal - low's Eve is here__ a - gain ooh__ ooh

27

ooh__ ooh Ga - ther the fi - nal har - vest in__ For all the hard - ship win - ter

32 **CHORUS**

8 brings Go light the lan - tern at your door, And hon - our those who've gone be - fore, the worlds that

37 **VERSE 3**

part us now are twain, For Hal - low's Eve is here__ a - gain Be - tween the bon - fires light - ly

42

tread, Bless the year that lies a - head The sea - son turns to frost and dew Be - fore the

47 **CHORUS**

8 sun its strength re - news. Go light the lan - tern at your door, And hon - our those who've gone be -

52

fore, the worlds that part us now are twain, For Hal - low's Eve is here__ a -

56

gain the worlds that part us now are twain__ For Hal - low's Eve is here a - gain

Bass

Hallows Eve

Chris Hoban
Arranged by Helen Vincent

$\text{♩} = 80$

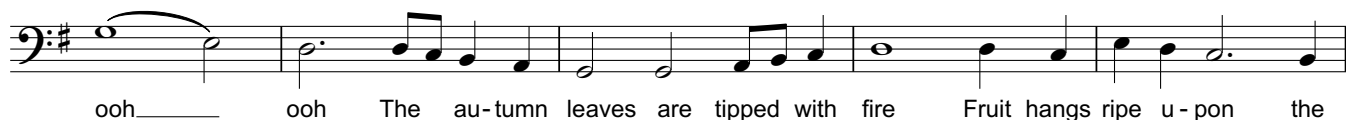


5

VERSE 1

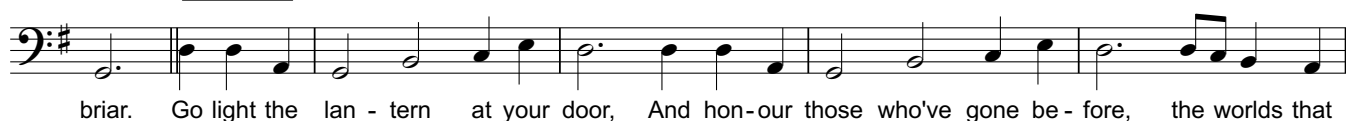


11



16

CHORUS



21

VERSE 2

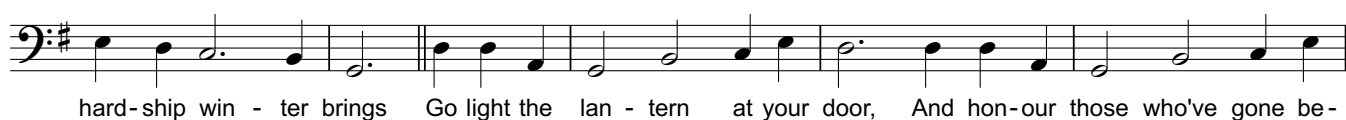


26



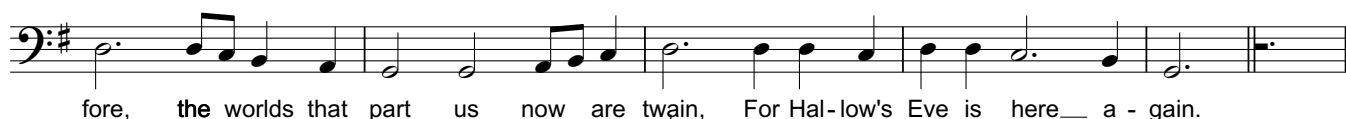
31

CHORUS



36

VERSE 3

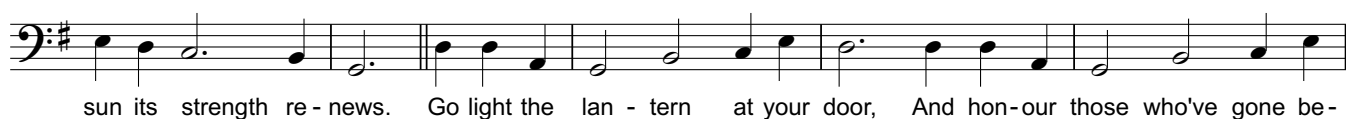


41



47

CHORUS



52



56

