

## Violin I

## Halsway Carol

Music: Nigel Eaton  
Words: Iain Frisk  
Arr: Helen Vincent-Tibke

$\text{♩} = 115$

8

13

18

22

27

VERSE 1  
VERSE 3

8

VERSE 2  
VERSE 4

8

CHORUS

7

*f*

51

55

60

65

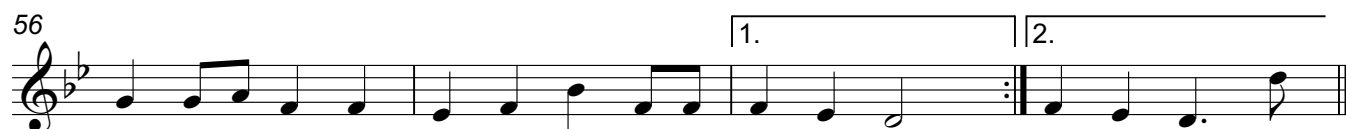
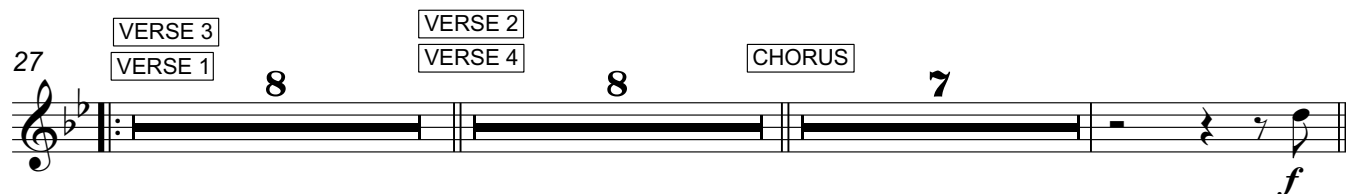
68

*p*

## Violin 2

## Halsway Carol

Music: Nigel Eaton  
Words: Iain Frisk  
Arr: Helen Vincent-Tibke



# Halsway Carol

Arr: Helen Vincent-Tibke

8

[illegible]

1.

15

1. 2.

1

21

1. 2.

VERSE 1  
VERSE 3

VERSE 2  
VERSE 4

**CHORUS**

27 VERSE 3 8 VERSE 4 8 CHORUS 8

1.

57

1. 2.

Detailed description: This musical notation is for measure 57. It begins with a treble clef, a key signature of one flat (B-flat), and a 3/8 time signature. The melody consists of eighth and quarter notes. A first ending bracket spans the first two measures of the measure, leading to a repeat sign. A second ending bracket spans the next two measures, which end with a double bar line. The notation includes a repeat sign and a final double bar line.

$p$

Violoncello

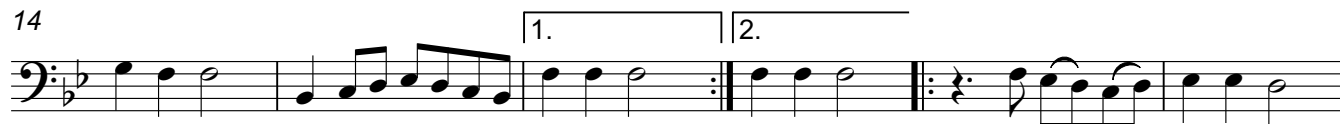
# Halsway Carol

Music: Nigel Eaton  
Words: Iain Frisk  
Arr: Helen Vincent-Tibke

♩=115



14



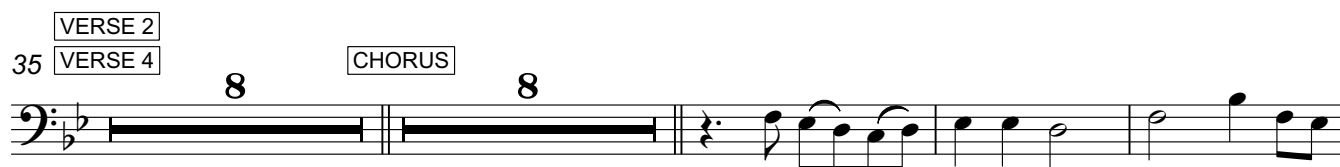
20



25



35



54



60



65



# Halsway Carol

Cornet 1 in B $\flat$

Music: Nigel Eaton  
Words: Iain Frisk  
Arr: Helen Vincent-Tibke

$\text{♩} = 115$

2

9

14

19

23

27

VERSE 1  
VERSE 3

8

VERSE 2  
VERSE 4

*pp*

40

CHORUS

7

*mf*

51

55

60

65

69

*p*

*pp*

# Halsway Carol

Cornet 2 in B $\flat$

Music: Nigel Eaton  
Words: Iain Frisk  
Arr: Helen Vincent-Tibke

$\text{♩} = 115$

2

9

14

1. 2.

19

23

1. 2.

VERSE 1  
VERSE 2  
VERSE 3  
VERSE 4

27

8

40

*pp*

CHORUS

7

51

55

1. 2.

60

65

69

*p* *pp*

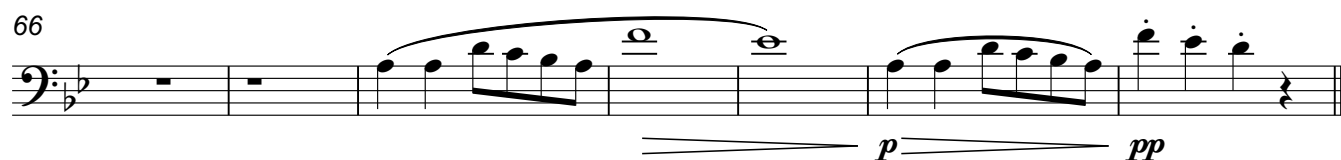
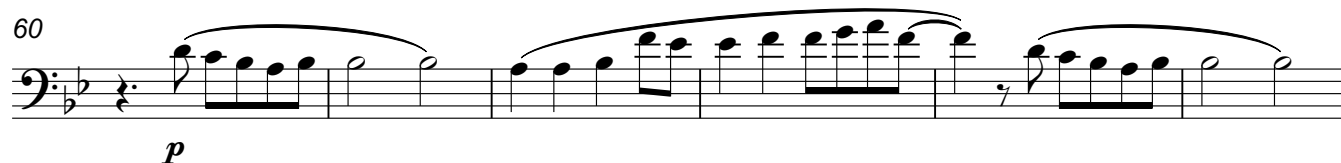
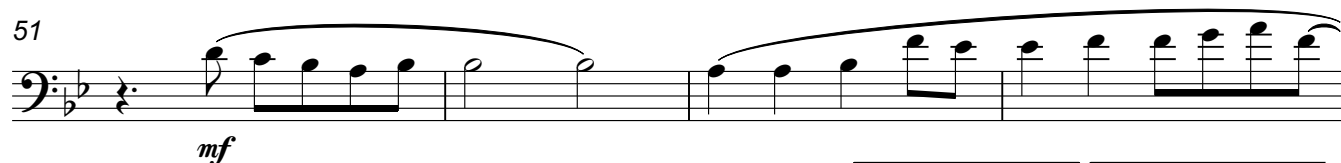
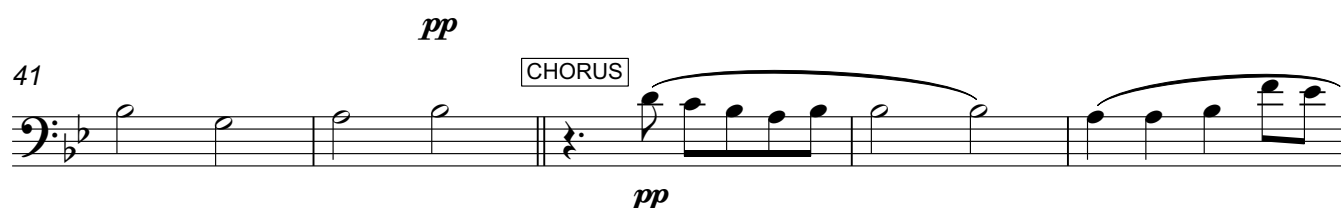
Trombone

# Halsway Carol

Music: Nigel Eaton

Words: Iain Frisk

Arr: Helen Vincent-Tibke



## Tuba

## Halsway Carol

Music: Nigel Eaton  
Words: Iain Frisk  
Arr: Helen Vincent-Tibke

$\text{♩} = 115$

8

16 1. 2.

22 1. 2.

27 VERSE 1 VERSE 3 8 VERSE 2 VERSE 4 *pp*

41 CHORUS *pp*

46

51 *mf*

55 1. 2.

60 *p*

66 *p pp*