

The Mary Ellen Carter

Cornet 1 in B \flat

Stan Rogers
Arr. Helen Vincent-Tibke

$\text{♩} = 105$

f

6

mp

10

VERSE 1

7

20

VERSE 2

7

31

VERSE 3

7

VERSE 4

5

mf

45

CHORUS

51

54

f

58

VERSE 5

7

66 **VERSE 6** 6 **CHORUS**

74

80 *f*

83 **VERSE 7** 7

92 **VERSE 8** 5

98 *mf* **CHORUS**

101

108 6 *f*

119

122 *rall.* *ff*

The Mary Ellen Carter

Cornet 2 in B \flat

Stan Rogers
Arr. Helen Vincent-Tibke

$\text{♩} = 105$

f

5

mp

9

VERSE 1

7

20

VERSE 2

7

31

VERSE 3

7

VERSE 4

5

45

CHORUS

51

54

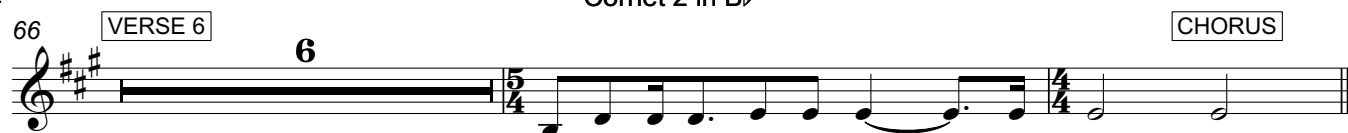
f

58

VERSE 5

7

66 VERSE 6 6 CHORUS



74



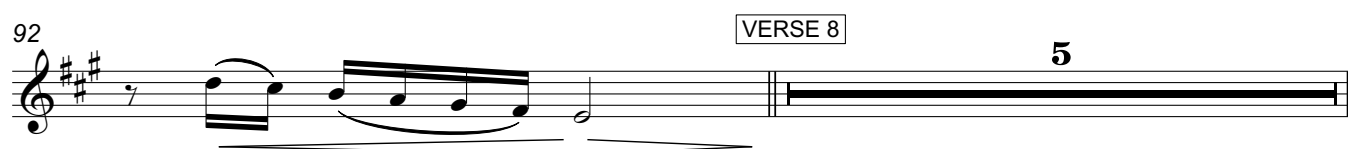
80



83 VERSE 7 7



92 VERSE 8 5



98 CHORUS



101



108 6 f



119



122 rall. ff

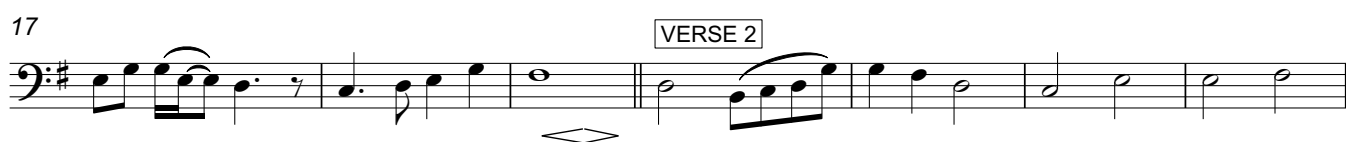


Trombone

The Mary Ellen Carter

Stan Rogers
Arr. Helen Vincent-Tibke

♩=105



54



58

VERSE 5



65

VERSE 6



72

CHORUS

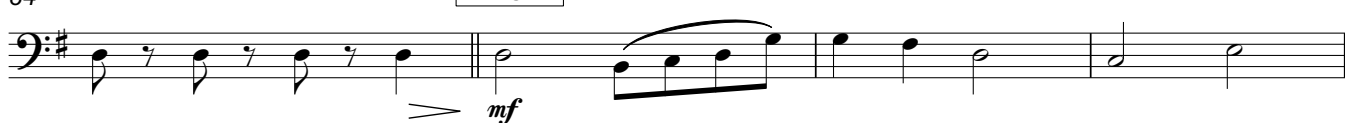


79



84

VERSE 7



88



92

VERSE 8



98

CHORUS



101



108

6



120

rall.



Euphonium

The Mary Ellen Carter

Stan Rogers
Arr. Helen Vincent-Tibke

$\text{♩} = 105$

f

6

mp

10

VERSE 1

17

VERSE 2

25

f

30

VERSE 3

mf

37

VERSE 4

44

CHORUS

51

54



58

VERSE 5



66

VERSE 6



73

CHORUS



80



85

VERSE 7



92

VERSE 8



98

CHORUS



105



117



121

rall.

